

Cáncer de cérvix

Aportación de un hospital de tercer nivel



XXVIII Reunión de la Sociedad Ginecológica Murciana

Murcia, 3 de marzo de 2018





**THE AMERICAN
JOURNAL OF OBSTETRICS**

AND

DISEASES OF WOMEN AND CHILDREN.

VOL. LXVI.

AUGUST, 1912.

NO. 2

ORIGINAL COMMUNICATIONS.

THE EXTENDED ABDOMINAL OPERATION FOR CARCINOMA UTERI.

(BASED ON 500 OPERATIVE CASES)

BY

PROF. DR. E. WERTHEIM,
Vienna.

(With Six Illustrations.)

Translated by

HERMANN GRAD, M. D.,*
New York.

A. THE DEVELOPMENT OF THE TECHNIC OF THE OPERATION.

From the beginning it has been clear that in order to obtain good results in the extended *abdominal operation for uterine cancer* the development of the technic was of great importance. Careful asepsis, rapid completion of the operation, a minimum loss of blood, careful handling of the organs to be liberated and the consideration of the heart in reference to the narcosis; all these points are of great moment in an individual already reduced in strength by the disease. We are, therefore, not in accord with Rosthorn,† who wishes to set aside the technical details with the remark that this operation should be carried out according to the idea of the individual operator. That other operators

Tendencias actuales

- **Cirugía mínimamente invasiva**
- **Preservación nerviosa**
- **Reducción de radicalidad**
- **Ganglio centinela**
- **Preservación de la fertilidad**

Supervivencia global

Autor	N	Estadio	Seguimiento	Supervivencia
Pellegrino (2009)	101	Ib1	30	95
Lee (2010)	139	Ia-IIa	92	93
Park (2011)	125	Ib1- Ib2	53	96/86
Yan (2013)	240	Ia- IIa	35	82/66

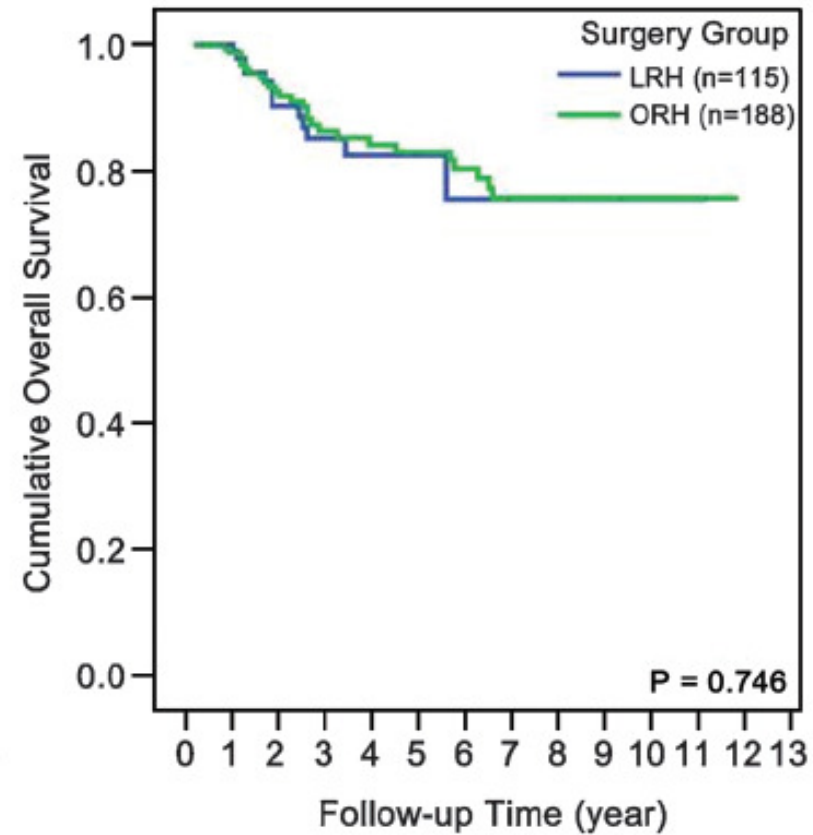
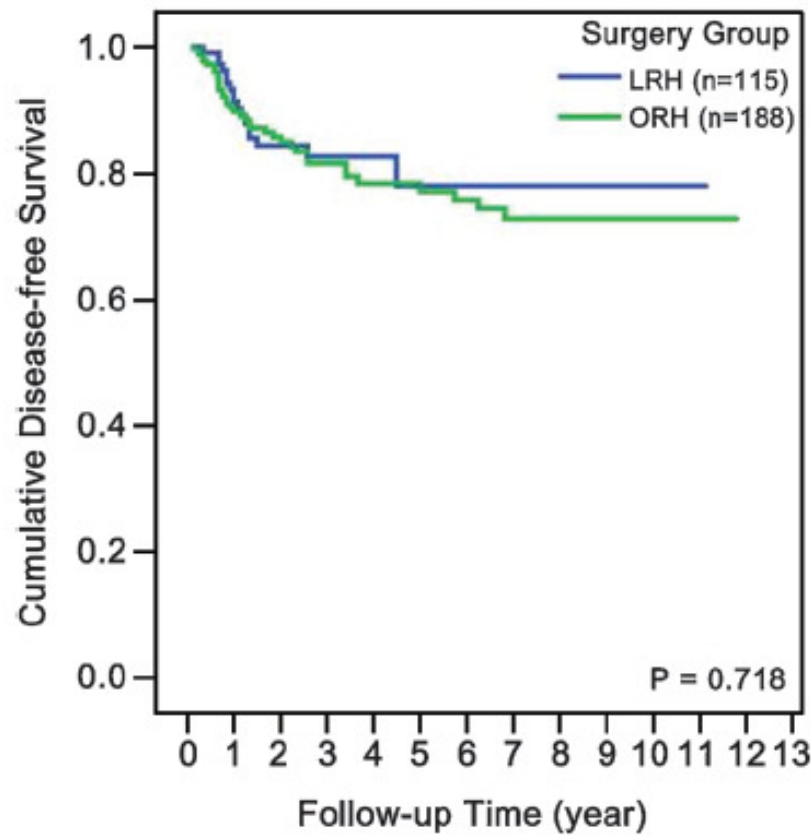
Laparoscopia vs laparotomía

	LPC	LPT	HCUVA
Tiempo	280	264	270
Hemorragia	300	500	---
Peristaltismo	2	3	2
Ganglios	26	22	16

n=303

n=23

Laparoscopy vs laparotomía



Laparoscopia vs laparotomía



ELSEVIER

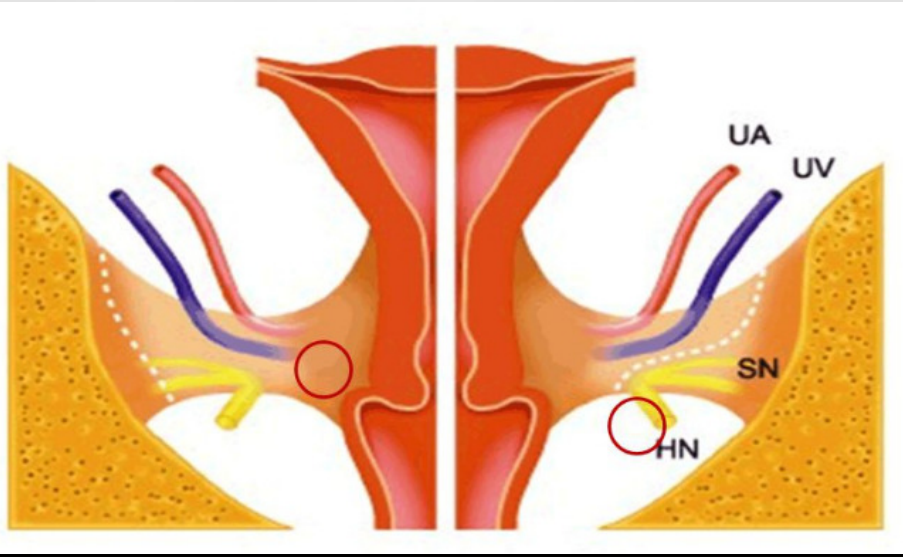
THE JOURNAL OF
MINIMALLY INVASIVE
GYNECOLOGY

A Phase III Randomized Clinical Trial Comparing Laparoscopic or Robotic Radical Hysterectomy with Abdominal Radical Hysterectomy in Patients with Early Stage Cervical Cancer

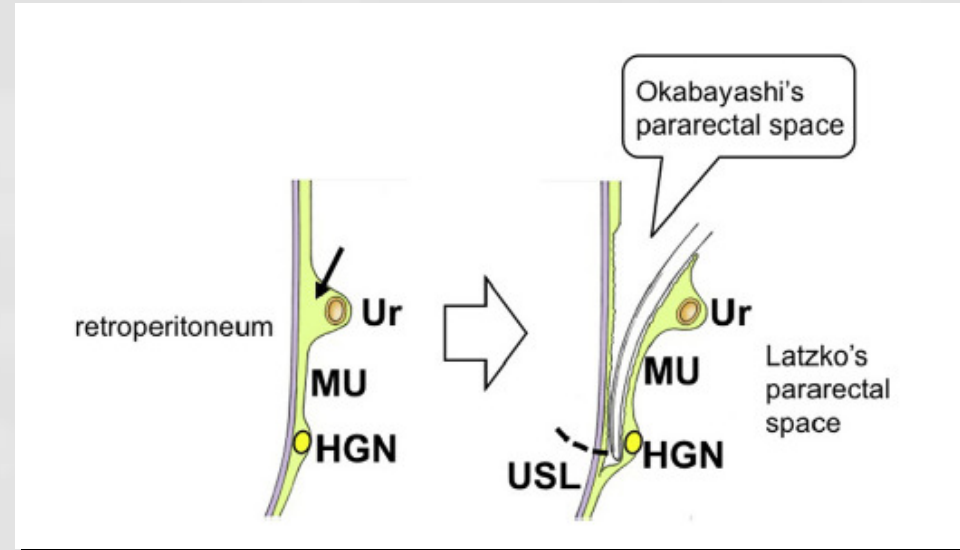
Andreas Obermair, MD*, Val GebSKI, MD, Michael Frumovitz, MD, MPH, Pamela T. Soliman, MD, MPH, Kathleen M. Schmeler, MD, MPH, Charles Levenback, MD, and Pedro T. Ramirez, MD

From the University of Queensland, School of Medicine, Herston, Brisbane, Queensland, Australia (Dr. Obermair); Department of Gynecological Oncology, Royal Brisbane and Women's Hospital, Herston, Brisbane, Queensland, Australia (Dr. Obermair); National Health and Medical Research Council Clinical Trials Center, Camperdown, New South Wales, Australia (Dr. GebSKI); and the Department of Gynecologic Oncology, University of Texas M.D. Anderson Cancer Center, Houston, Texas (Drs. Frumovitz, Soliman, Schmeler, Levenback, and Ramirez).

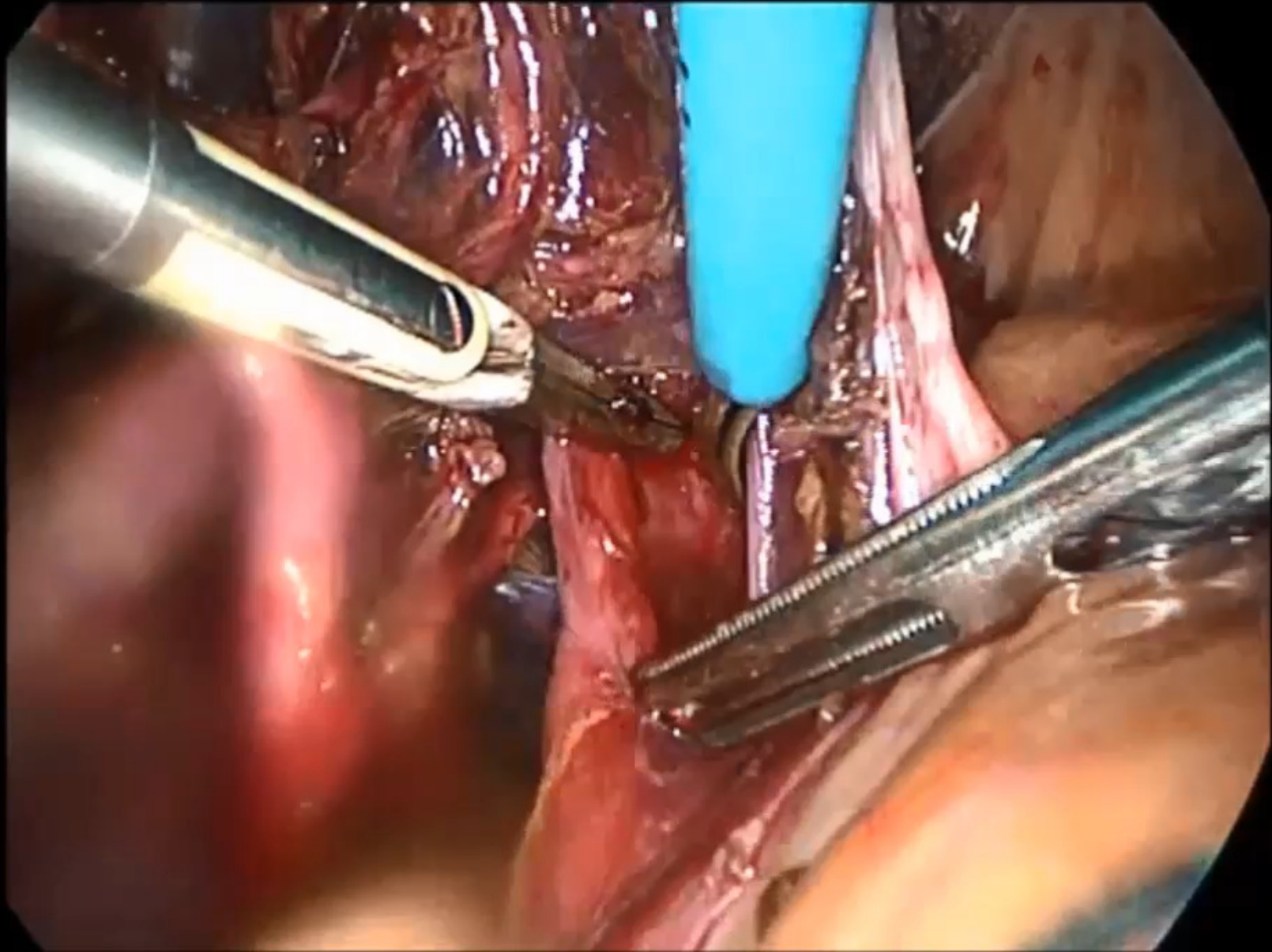
Preservación nerviosa



- **Vena uterina inferior en el parametrio**

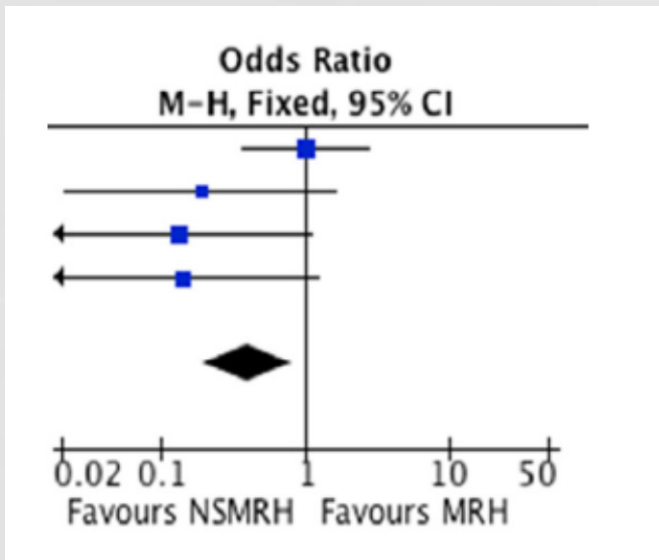


- **Parte lateral del lig. uterosacro**
- **Parte lateral lig. vesico- uterino**

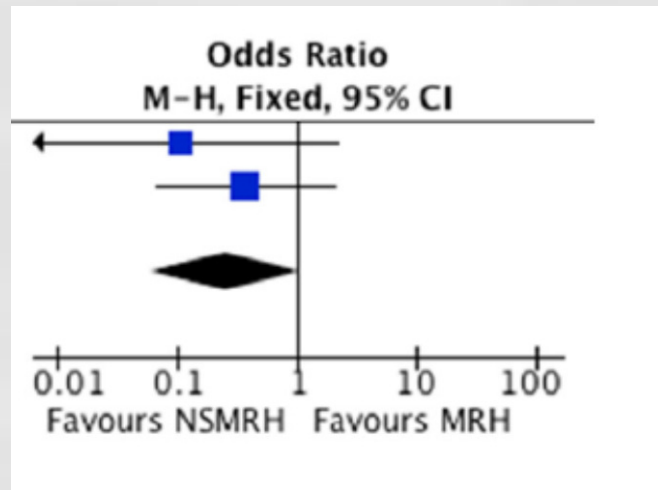


Preservación nerviosa

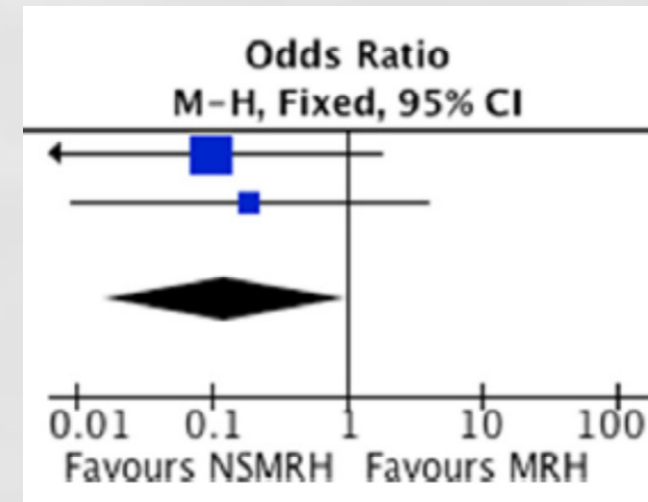
Disfunción vesical



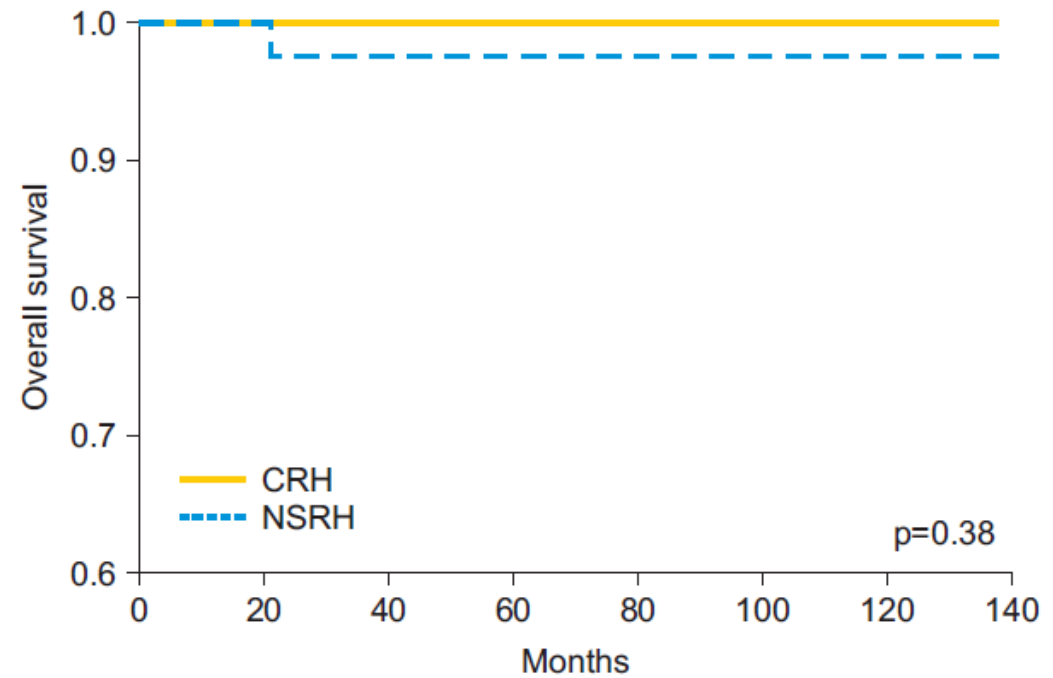
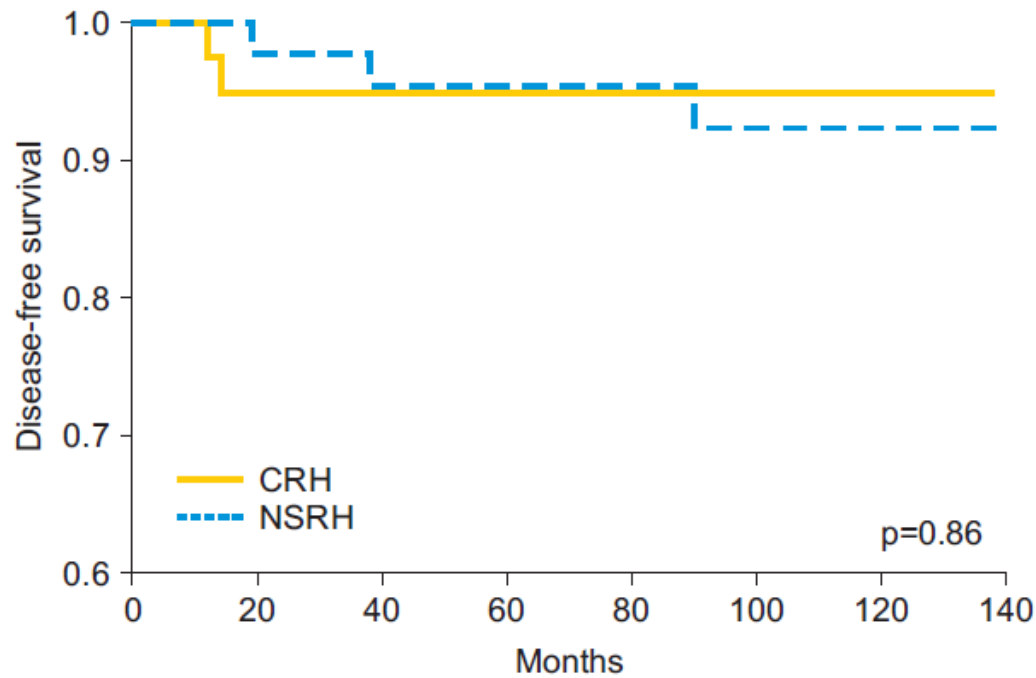
Disfunción sexual



Disfunción rectal



Preservación nerviosa



Disminución de la radicalidad



Disminución de la radicalidad

	T	Invasión	ILV	Parametrio
Covens '02	<2cm	<1cm	G-	0,6
Stegerman '07	<2cm	<1cm	No/ G-	0
Wright '08	<2cm	--	No/G-	0,4
Frumovitz '09	<2cm	--	No	0

Disminución de la radicalidad

- **n= 62**
 - **35 Conización**
 - **27 Histerectomía Piver I**
- **Seguimiento: 56 meses**
- **Recidivas: 0**
- **Supervivencia 100%**
- **7 gestaciones a término**

Disminución de la radicalidad

	N	Criterios	Intervención
ConCerv	195	IA1-IB1	Cono/Histerectomía
SHAPE	700	<2cm tamaño	WM vs Histerectomía
GOG 278	600	<1cm invasión	Cono/ Histerectomía



Ganglio centinela

- **Factor pronóstico más importante**
- **Afectación ganglionar: 5-15%**
- **Pruebas de imagen poco sensibles**
- **Morbilidad de linfadenectomía**

Ganglio centinela

- **Sensibilidad: 90%**
- **Menor sensibilidad con estadio y tamaño**
- **Igual detección con distintos trazadores**
- **Detección en sitios inusuales**
- **“Ultrastaging”**



Kaplan-Meier RFS estimates: BSLNB vs. BPLND

